

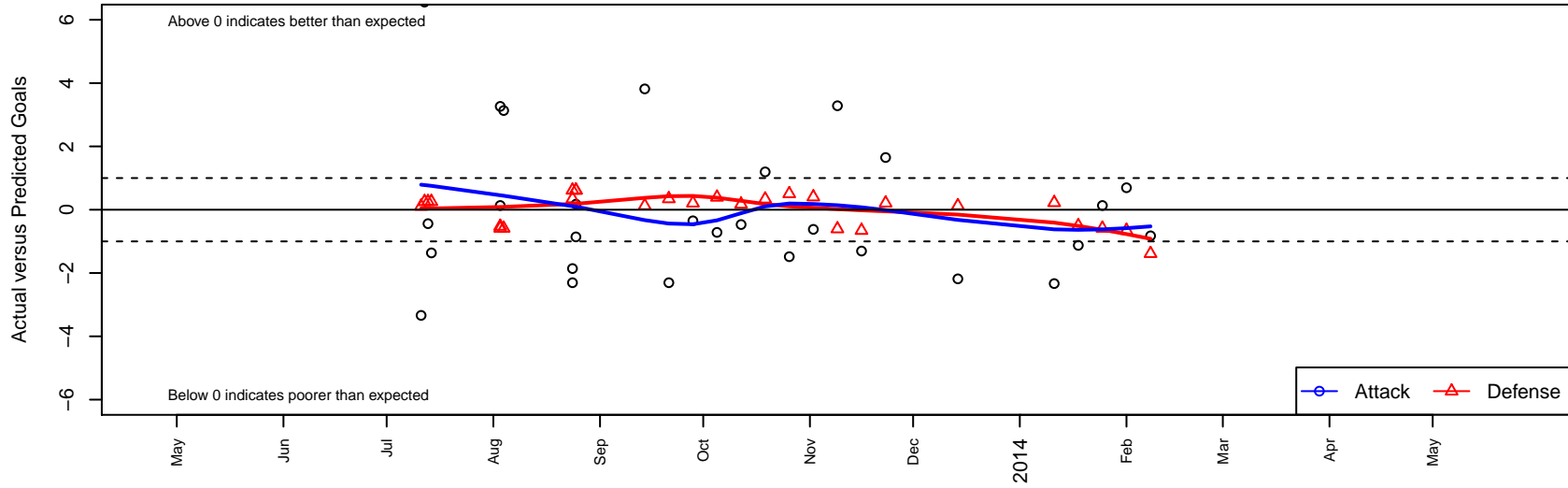
Kent United Green G02

Kent United
 Kent, WA
 G02 total strength=425
 attack=0.24 defense=0.31
 fall league = NPSL G11D3
 alt names used:
 Kent United G02 Green
 Kent United Green [G02]
 KYSA KENT UNITED G02 GREEN (WA)

Venues played:
 Kent Cornucopia Cup GU11 Gold U11
 Blast Off GU11 B
 Xtreme Cup GU11
 NPSL G11D3
 Founders Cup G02



Kent United Green G02
 Dots are actual minus expected GF (blue circles) and GA (red triangles).
 Blue line is smoothed change in attack strength. Red is smoothed change in defense strength.



	date	home		away		venue	pred.home	pred.away
3151	2014-02-08	Kent United Green G02	0	FC Edmonds Black Ice G02	2	Founders Cup G02	0.83	0.61
3122	2014-02-01	Kent United Green G02	4	Highline Select G02	1	Founders Cup G02	3.31	0.34
3087	2014-01-25	Kent United Green G02	2	Seattle United S Blue G02	1	Founders Cup G02	1.87	0.41
3081	2014-01-18	Pacific FC Orange G02	1	Kent United Green G02	1	Founders Cup G02	0.49	2.13
3045	2014-01-11	Kent United Green G02	1	TC United Wirth G02	0	Founders Cup G02	3.33	0.22
3022	2013-12-14	Fuerza FC Academy G03	0	Kent United Green G02	6	NPSL G11D3	0.13	8.18
2876	2013-11-23	Kent United Green G02	8	North Whidbey Islanders G02	0	NPSL G11D3	6.35	0.21
2790	2013-11-16	Kent United Green G02	2	Highline Select G02	1	NPSL G11D3	3.31	0.34
2682	2013-11-09	Seattle United S White G02	1	Kent United Green G02	6	NPSL G11D3	0.39	2.72
2536	2013-11-02	Kent United Green G02	2	TFA Barcelona OR G02	0	NPSL G11D3	2.62	0.40
2391	2013-10-26	Kent United Green G02	2	Tracyton Tigers G02	0	NPSL G11D3	3.48	0.50
2258	2013-10-19	Marysville Force G02	0	Kent United Green G02	5	NPSL G11D3	0.33	3.80
2101	2013-10-12	Seattle United NE Blue G02	0	Kent United Green G02	3	NPSL G11D3	0.17	3.47
1910	2013-10-05	Kent United Green G02	2	Seattle United S White G02	0	NPSL G11D3	2.72	0.39
1732	2013-09-28	North Whidbey Islanders G02	0	Kent United Green G02	6	NPSL G11D3	0.21	6.35
1587	2013-09-21	Highline Select G02	0	Kent United Green G02	1	NPSL G11D3	0.34	3.31
1420	2013-09-14	Kent United Green G02	12	Fuerza FC Academy G03	0	NPSL G11D3	8.18	0.13
1132	2013-08-25	FC Edmonds Black Ice G02	0	Kent United Green G02	1	Xtreme Cup GU11	0.61	0.83
1134	2013-08-25	Kent United Green G02	1	Beacon Hill Lady Dragons G02	0	Xtreme Cup GU11	1.86	0.62
1092	2013-08-24	Beacon Hill Lady Dragons G02	0	Kent United Green G02	0	Xtreme Cup GU11	0.62	1.86
1097	2013-08-24	Kent United Green G02	1	Highline Select G02	0	Xtreme Cup GU11	3.31	0.34
691	2013-08-04	Kent United Green G02	5	Seattle United S Blue G02	1	Blast Off GU11 B	1.87	0.41
633	2013-08-03	Kent United Green G02	6	Harbor Premier Green G02	1	Blast Off GU11 B	2.74	0.47
635	2013-08-03	Seattle United S Blue G02	1	Kent United Green G02	2	Blast Off GU11 B	0.41	1.87
350	2013-07-14	Kent United Green G02	3	FWFC White G02	0	Kent Cornucopia Cup GU11 Gold U11	4.36	0.25
320	2013-07-13	Kent United Green G02	3	MVP Marauders White G02	0	Kent Cornucopia Cup GU11 Gold U11	3.44	0.25
282	2013-07-12	Kent United Green G02	10	MVP Marauders White G02	0	Kent Cornucopia Cup GU11 Gold U11	3.44	0.25
270	2013-07-11	Kent United Green G02	7	SCORE Patriots Blue G02	0	Kent Cornucopia Cup GU11 Gold U11	10.34	0.11